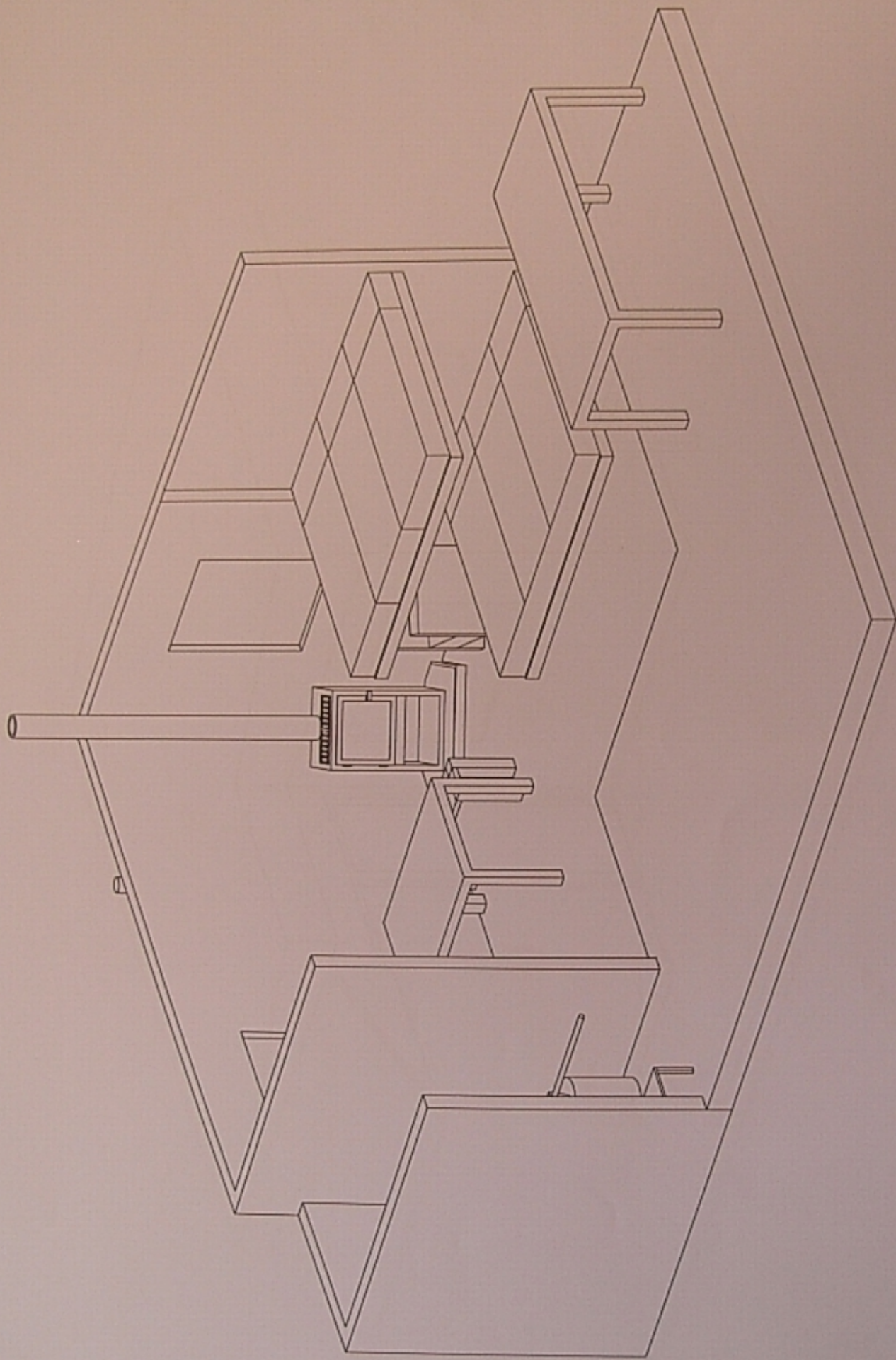


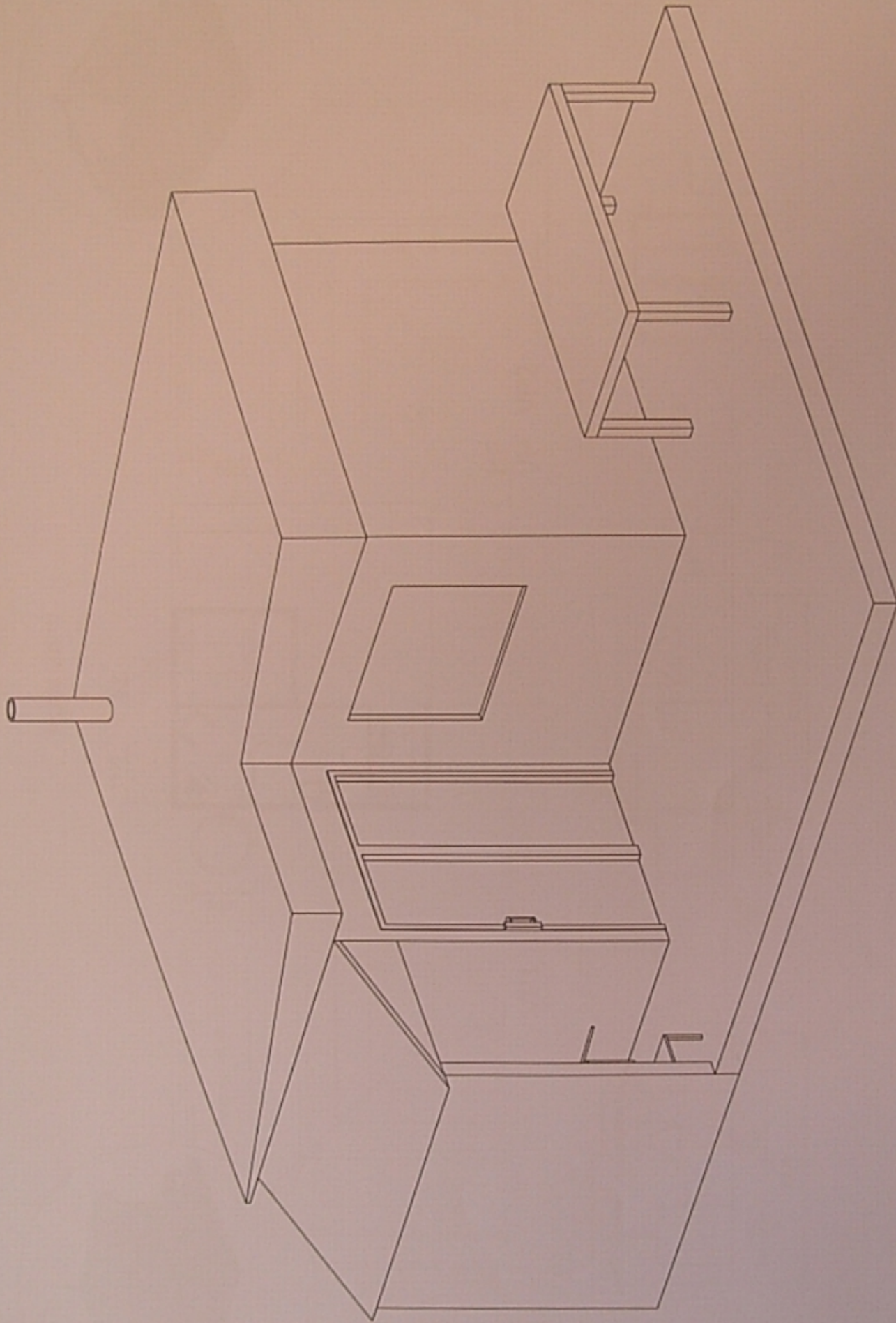
NZQA
Inspected

17/6/16	DIMETRIC	DOC HUT	DRAWING 3/3	NTS
---------	----------	---------	-------------	-----



NZQA
Assessed

17/6/16	DIMETRIC	DOC HUT	DRAWING 2/3		NTS
---------	----------	---------	-------------	--	-----



NZQA
crossed

17/6/16	DIMETRIC	DOC HUT	DRAWING 1/3	NTS
---------	----------	---------	-------------	-----

Level 1 Design and Visual Communication

91065: Produce instrumental paraline drawings to communicate design ideas

Exemplar for Merit

This submission of multiple paraline drawings communicates information of the exterior form of the building and interior information not visible in the main outline.

Line intensity is consistent.

This submission could be strengthened by a different choice of viewpoints, to more effectively communicate detail of internal components.

NOTE: This submission was photographed, to better communicate the quality of the drawing. This has resulted in some distortion, which was not evident in the original.