

# Design and Visual Communication

## AS 91339

### Exemplar B - Excellence

**AS91339: Produce instrumental perspective projection drawings to communicate design ideas (3 credits)**

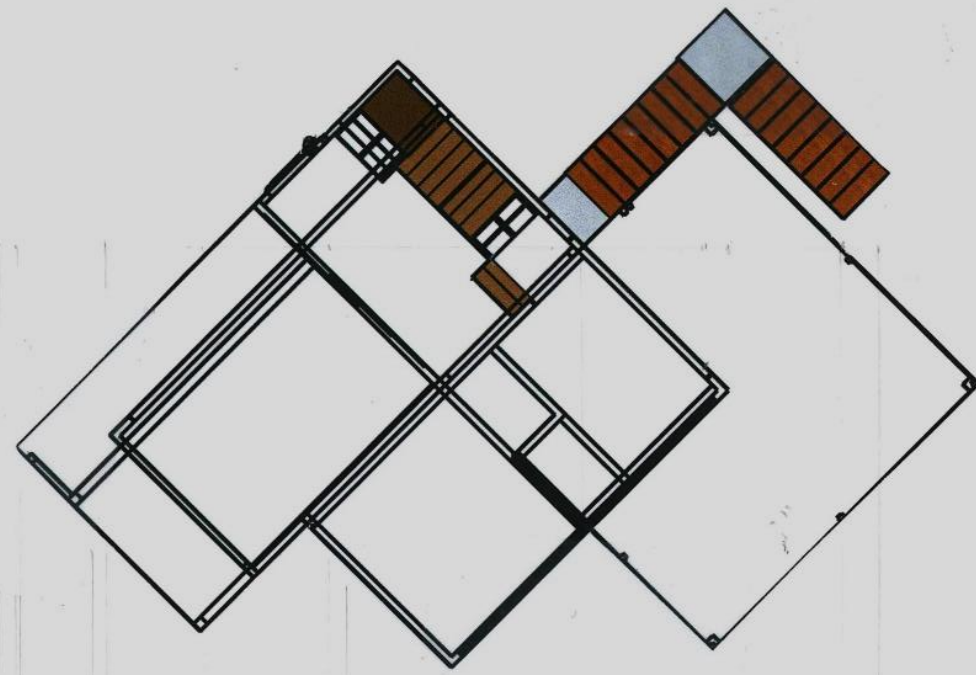
Achievement	Achievement with Merit	Achievement with Excellence
Produce instrumental perspective projection drawings to communicate design ideas.	Produce instrumental perspective projection drawings to clearly communicate design ideas	Produce instrumental perspective projection drawings to effectively communicate design ideas.
Uses perspective projection drawing <b>techniques</b> to communicate complex visual information. <hr/>	Uses perspective projection drawing techniques to <b>skilfully</b> communicate complex visual information. <hr/>	Demonstrate an ability to <b>select a viewpoint</b> that enables complex visual information of the design to be <b>effectively</b> communicated. <hr/>
The instrumental perspective drawing shows <b>design features</b> . <hr/>	The instrumental perspective drawing <b>clearly</b> shows <b>detail</b> of the design features <hr/>	The instrumental perspective drawing <b>accurately</b> shows <b>detail</b> of the design features <hr/>

**E**

#### COMMENTS:

The perspective principles have been applied correctly and the view point has been chosen to achieve a good sized drawing. The direction allows complex visual information to be communicated effectively. Although not all features are viewed in detail, there are enough drawn to enhance the view allowing this drawing to achieve excellence at the lower end.

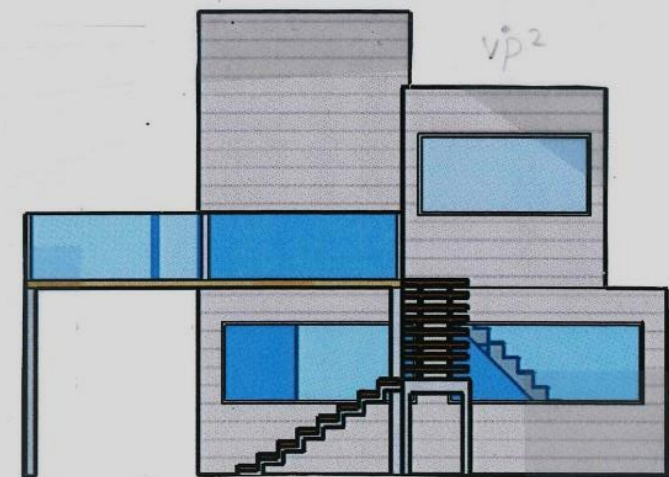
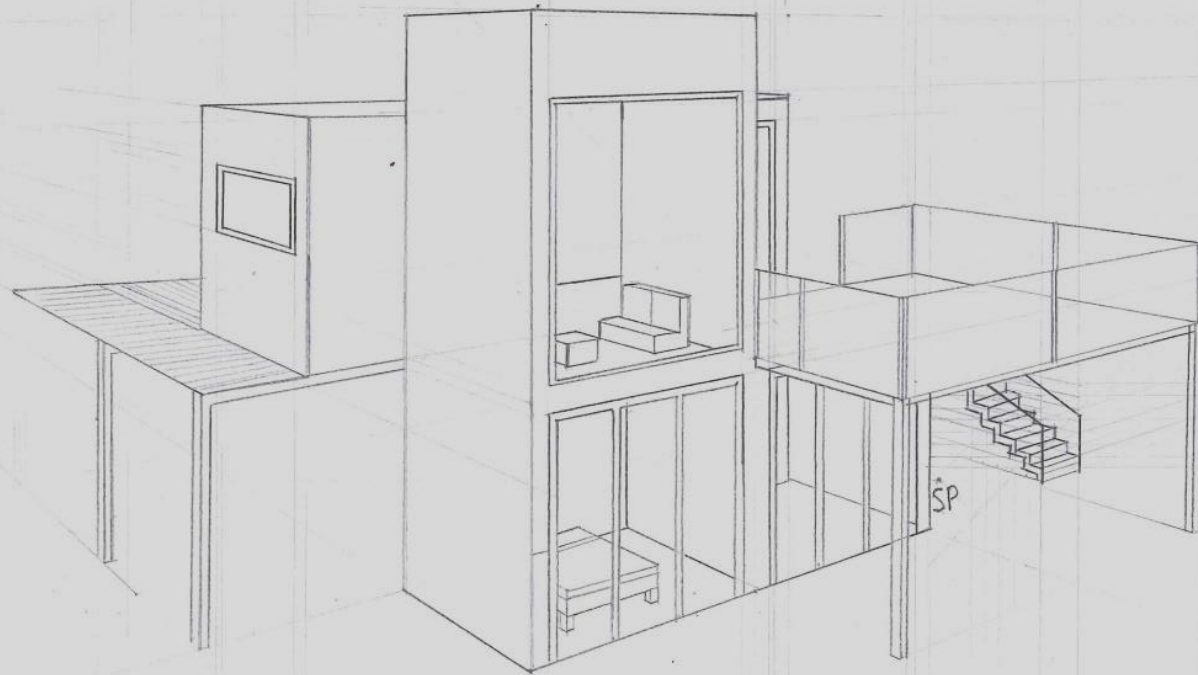
PICTURE PLANE



HL

HORIZON LINE  
VP

GROUND LINE



VP<sup>2</sup>

MECHANICAL PERSPECTIVE  
 MONDAY 19<sup>th</sup> OCTOBER 2015  
 SCALE 1:100