

# Design and Visual Communication

## AS 91339

### Exemplar C - Merit

**AS91339: Produce instrumental perspective projection drawings to communicate design ideas (3 credits)**

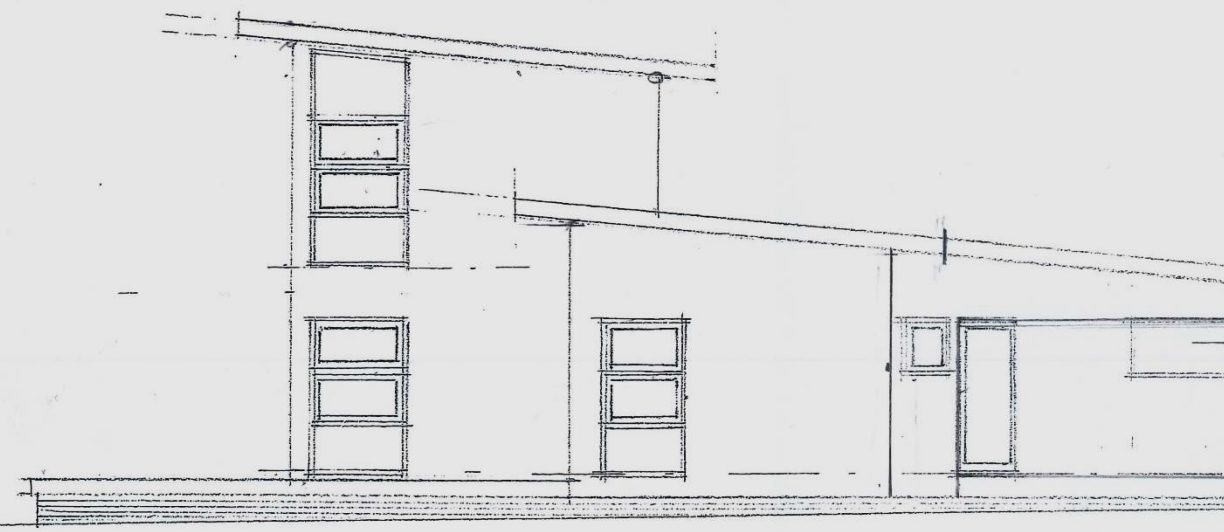
Achievement	Achievement with Merit	Achievement with Excellence
Produce instrumental perspective projection drawings to communicate design ideas.	Produce instrumental perspective projection drawings to clearly communicate design ideas	Produce instrumental perspective projection drawings to effectively communicate design ideas.
Uses perspective projection drawing <b>techniques</b> to communicate complex visual information. <hr style="border: 1px solid red;"/>	Uses perspective projection drawing techniques to <b>skilfully</b> communicate complex visual information. <hr style="border: 1px solid red;"/>	Demonstrate an ability to <b>select a viewpoint</b> that enables complex visual information of the design to be <b>effectively</b> communicated. <hr style="border: 1px solid red;"/>
The instrumental perspective drawing shows <b>design features</b> . <hr style="border: 1px solid red;"/>	The instrumental perspective drawing <b>clearly</b> shows <b>detail</b> of the design features <hr style="border: 1px solid red;"/>	The instrumental perspective drawing <del>accurately</del> shows <b>detail</b> of the design features



**COMMENTS:**

The perspective principles have been applied correctly and the direction and height of the view point have been chosen to achieve a larger drawing that enables the communication of the design. However, not all of the features are shown accurately or in detail. For this size of drawing greater detail of the features needs to be drawn so as to enhance the view of the building. This submission has achieved at the lower end of the merits.

STATION POINT



HEIGHT LINE

