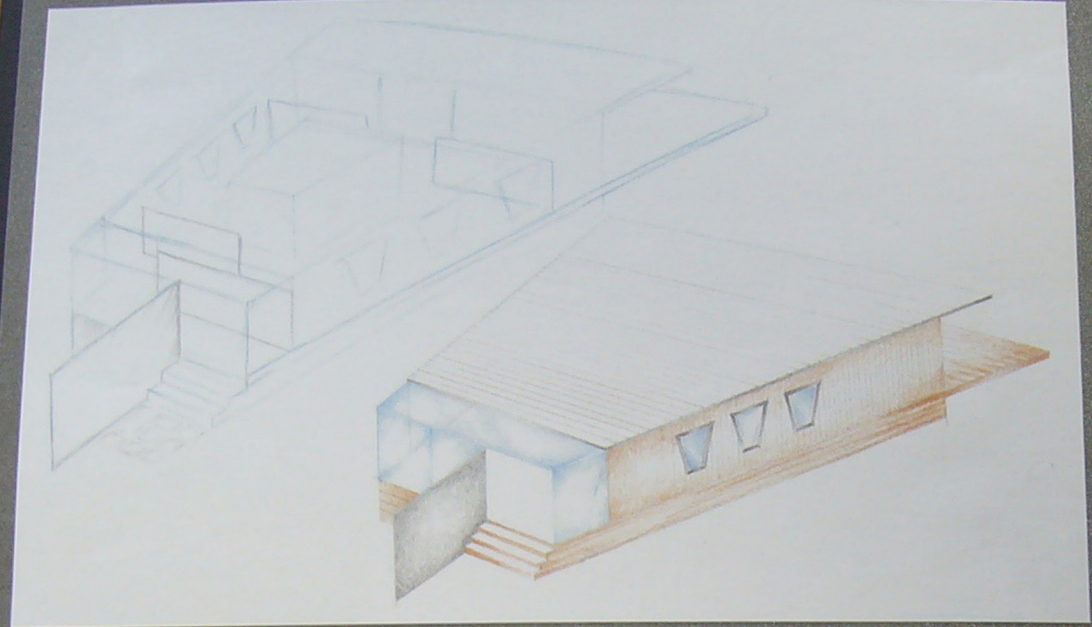


MODERN PAVILION

FINAL DESIGN

Student 2: High Merit (Page 1)



Three steps up to a glass encased entrance. Brushed aluminium exterior panel creates the feeling of a walkway. Glass cube front gives an 'open to the outdoors' effect. The use of dividing panels upon entering form a corridor. These panels are not full height to the ceiling in order to keep an overall open effect. These walls are designed to be moveable so that they allow for differing spaces and are perfect for exhibiting artwork. The inner central room is used as a seminar/screening room with moveable seating, and in the same central room there are bathroom facilities. These walls for the inner room reach full height in order to sound proof the space. A steel structured overhang provides shade and shelter to part of the timber deck at the rear of the pavilion. Three large windows mirroring the shape of the overall structure sit symmetrically along each wall, encased in brushed aluminium framing which contrasts against the timber wall paneling.