

DESIGN BRIEF

Your project involves completing a design proposal for a temporary exhibition pavilion, designed within the Auckland Domain site to provide a unique showcase for contemporary architectural practice. The pavilion will be a public space and host to a special Museum programme of film screening, talks and display of works during the summer of 2012-2013.

SITE ANALYSIS

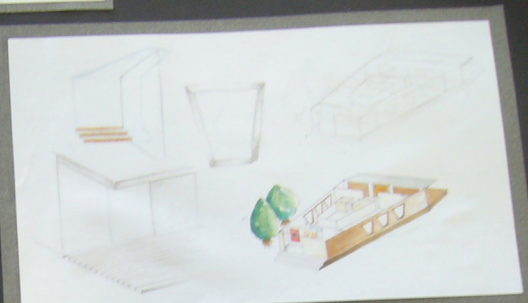
Auckland Museum was New Zealand's first museum, established in 1852. The museum tells the story of New Zealand with Maori and Pacific collections. It is one of New Zealand's most popular man-made tourist attractions with around half a million visitors every year. The building is also one of the most iconic buildings in Auckland, constructed in the neo-classical style, and situated in the Auckland Domain.

3



TOKAIO PONGU HIRI
AUCKLAND MUSEUM

SKETCHES



These sketches show some initial ideas and the thought process of the final pavilion design. The design was based on the modernist movement and inspired by architects such as Frank Lloyd Wright and Pierre Koenig. These rough ideas concluded the decision of my final design.

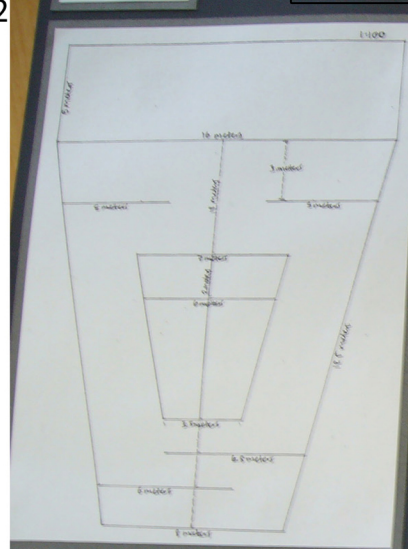
ELEVATION



This is a side elevation of the pavilion and shows the shape and placement of the three windows. Stairs lead up to the buildings entrance and the exit is via the deck covered party with an overhanging roof at the rear of the building. The scale is 1:100

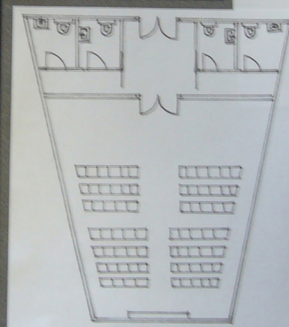
2

MEASUREMENTS



This image shows the measurements that make up my pavilion. You can see how the smaller trapezium inside the larger trapezium is the same shape, but scaled down. The floor area is 80 meters squared. As you walk through the entrance, two walls measured 6 meters and 6.5 meters are used as corridors that lead into the open space. There is a lot of wall space for exhibiting artworks.

FLOORPLAN



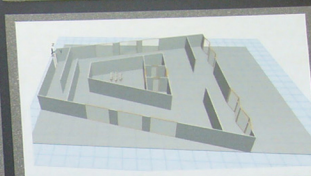
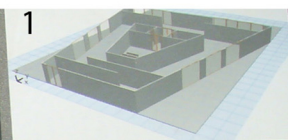
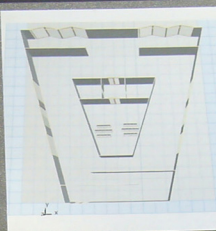
The top image shows the floor plan of the whole pavilion, and the image to the left is a large image of the seminar room. The entrance is through a sliding door, and then exit to the outdoor area is through the glass bifold doors. Two male toilets, and two female toilets are located in the same middle section as the seminar room, this is accessible from all areas of the pavilion.

MATERIALS



Using the modernist features such as little or no ornamentation, man-made materials and emphasis on function I was able to select the material that had the best fit for my pavilion design. These were: steel for the framework, timber panelling for the exterior side walls, steel panelling for the roof, polished concrete for the floor, timber roofing with a steel overhang for the rear deck and a cube made from glass for the front entrance. The three most used materials for modern architecture are steel, glass and concrete, all of which are incorporated into my design. Strong linear elements and bold straight and angled lines form the structure of my design. The large amount of glass allows the rooms to share the light. The materials are shown in their natural form and nothing is hidden. For example beams and structural elements are exposed.

COMPUTER GENERATED



This is a mock up of my pavilions basic shape and structure on the computer software Archicad. It is to the scale 1:100, although windows and doors are not the right shape or style and the bathroom facilities are incomplete, the software is able to show the pavilion in a 3D form.

1