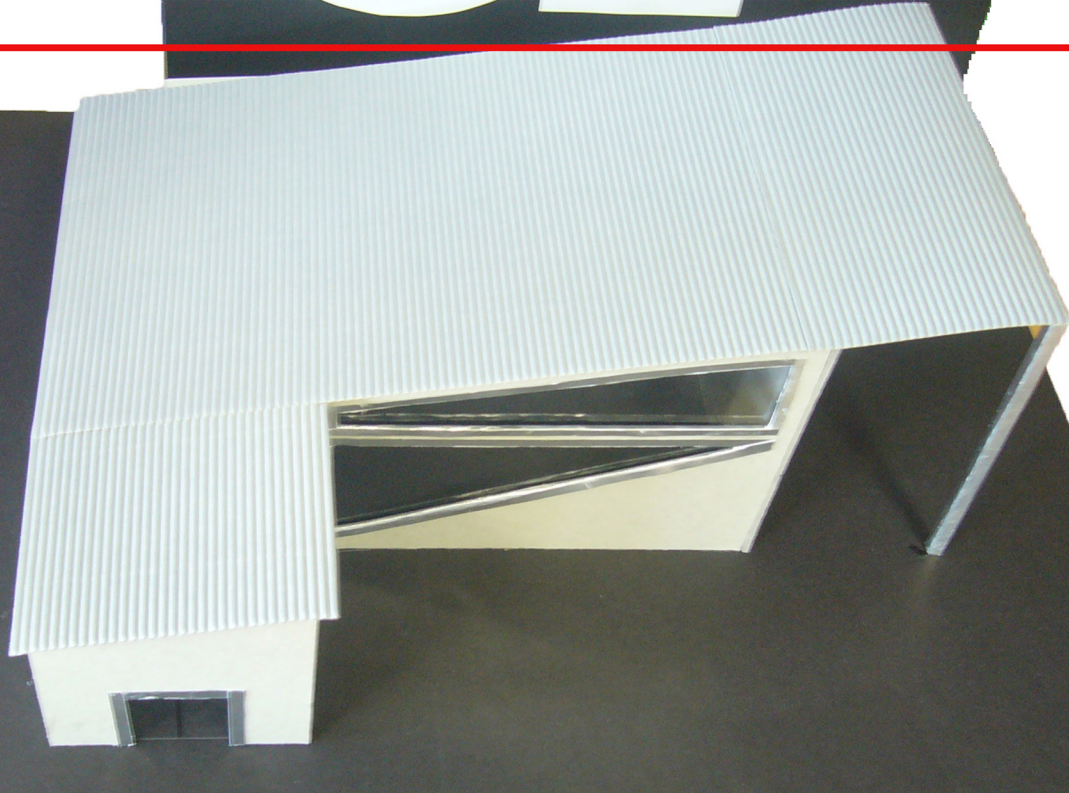


1



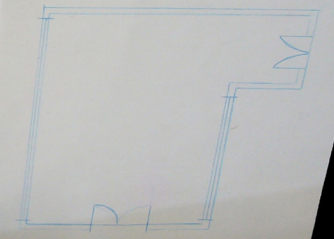
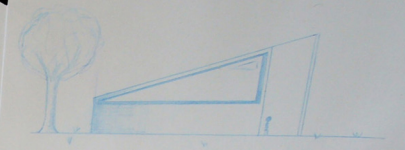
2

PAVILION DESIGN

Modernism is a building style that emphasizes function. Modernism designs follow a set of characteristics such as the buildings focus more on the function rather than decorative qualities, the use of modern age materials such as mixtures of glass and metal or metal and concrete etc, rather than older materials such as brick or wood as these are more commonly used in design movements that use more ornamental approaches. Designs that do fit into modernism tend to use sharp, angular lines and mostly rectangular shapes.

My pavilion is based on the design movement of modernism and is influenced by the museum nearby. My pavilion does not include a bathroom or any interior features as I had planned for it to be only used for exhibitions and as there are facilities in the museum already. For easier access I have two entrances and it is also facing north west so that the windows make the most of all day sunlight of the summertime when it is planned that the pavilion will be used.

The way that this pavilion is influenced by the museum is recognized in the height of the pillars at the front entrance to both the museum and my pavilion. The other features of my pavilion are focused largely on the design movement of modernism. An example of this is the large use of glass in the window and other modern materials such as metal in the structure.

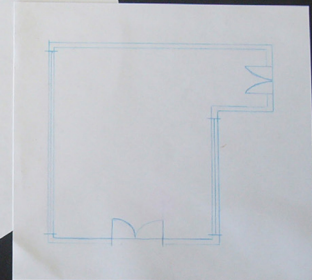
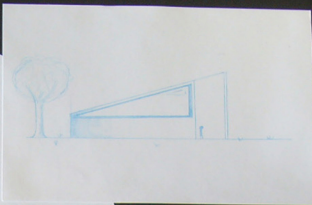


PAVILION DESIGN

Modernism is a building style that emphasizes function. Modernism designs follow a set of characteristics such as the buildings focus more on the function rather than decorative qualities, the use of modern age materials such as mixtures of glass and metal or metal and concrete etc, rather than older materials such as brick or wood as these are more commonly used in design movements that use more ornamental approaches. Designs that do fit into modernism tend to use sharp, angular lines and mostly rectangular shapes.

My pavilion is based on the design movement of modernism and is influenced by the museum nearby. My pavilion does not include a bathroom or any interior features as I had planned for it to be only used for exhibitions and as there are facilities in the museum already. For easier access I have two entrances and it is also facing north west so that the windows make the most of all day sunlight of the summertime when it is planned that the pavilion will be used.

The way that this pavilion is influenced by the museum is recognized in the height of the pillars at the front entrance to both the museum and my pavilion. The other features of my pavilion are focused largely on the design movement of modernism. An example of this is the large use of glass in the window and other modern materials such as metal in the structure.



PAVILION DESIGN

Modernism is a building style that emphasizes function. Modernism designs follow a set of characteristics such as the buildings focus more on the function rather than decorative qualities, the use of modern age materials such as mixtures of glass and metal or metal and concrete etc, rather than older materials such as brick or wood as these are more commonly used in design movements that use more ornamental approaches. Designs that do fit into modernism tend to use sharp, angular lines and mostly rectangular shapes.

My pavilion is based on the design movement of modernism and is influenced by the museum nearby. My pavilion does not include a bathroom or any interior features as I had planned for it to be only used for exhibitions and as there are facilities in the museum already. For easier access I have two entrances and it is also facing north west so that the windows make the most of all day sunlight of the summertime when it is planned that the pavilion will be used.

The way that this pavilion is influenced by the museum is recognized in the height of the pillars at the front entrance to both the museum and my pavilion. The other features of my pavilion are focused largely on the design movement of modernism. An example of this is the large use of glass in the window and other modern materials such as metal in the structure.

