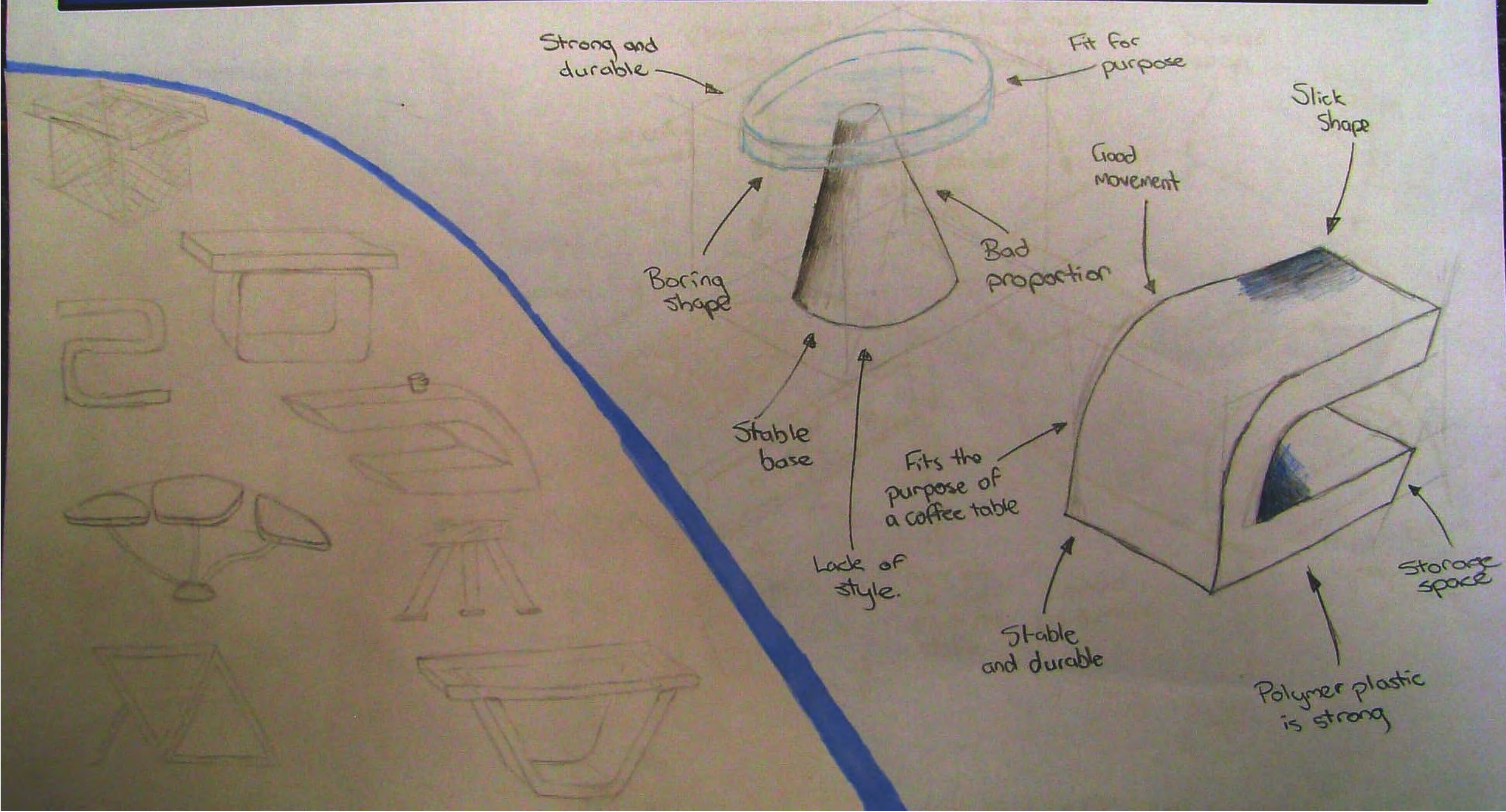
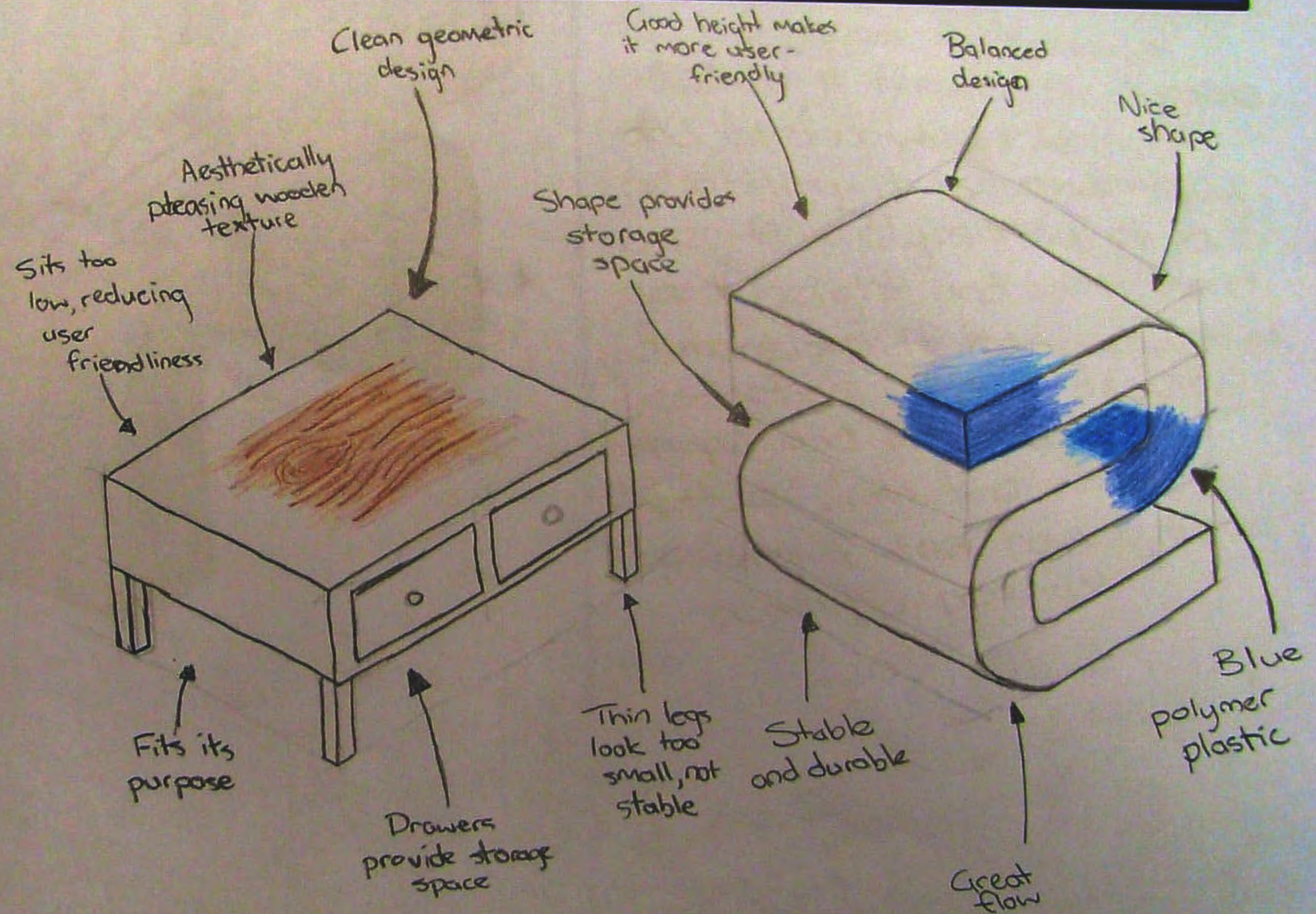
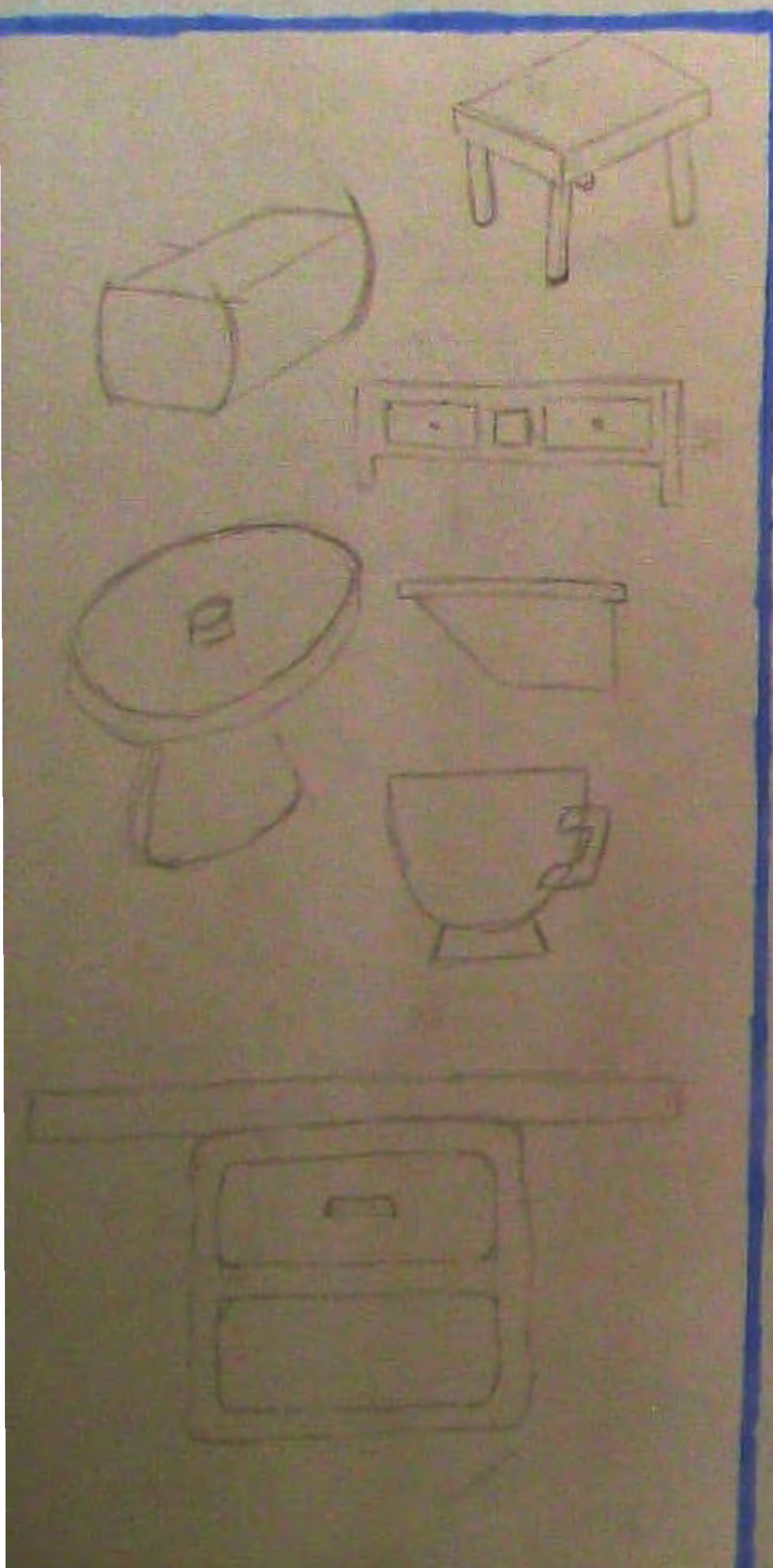


# Initial Ideas



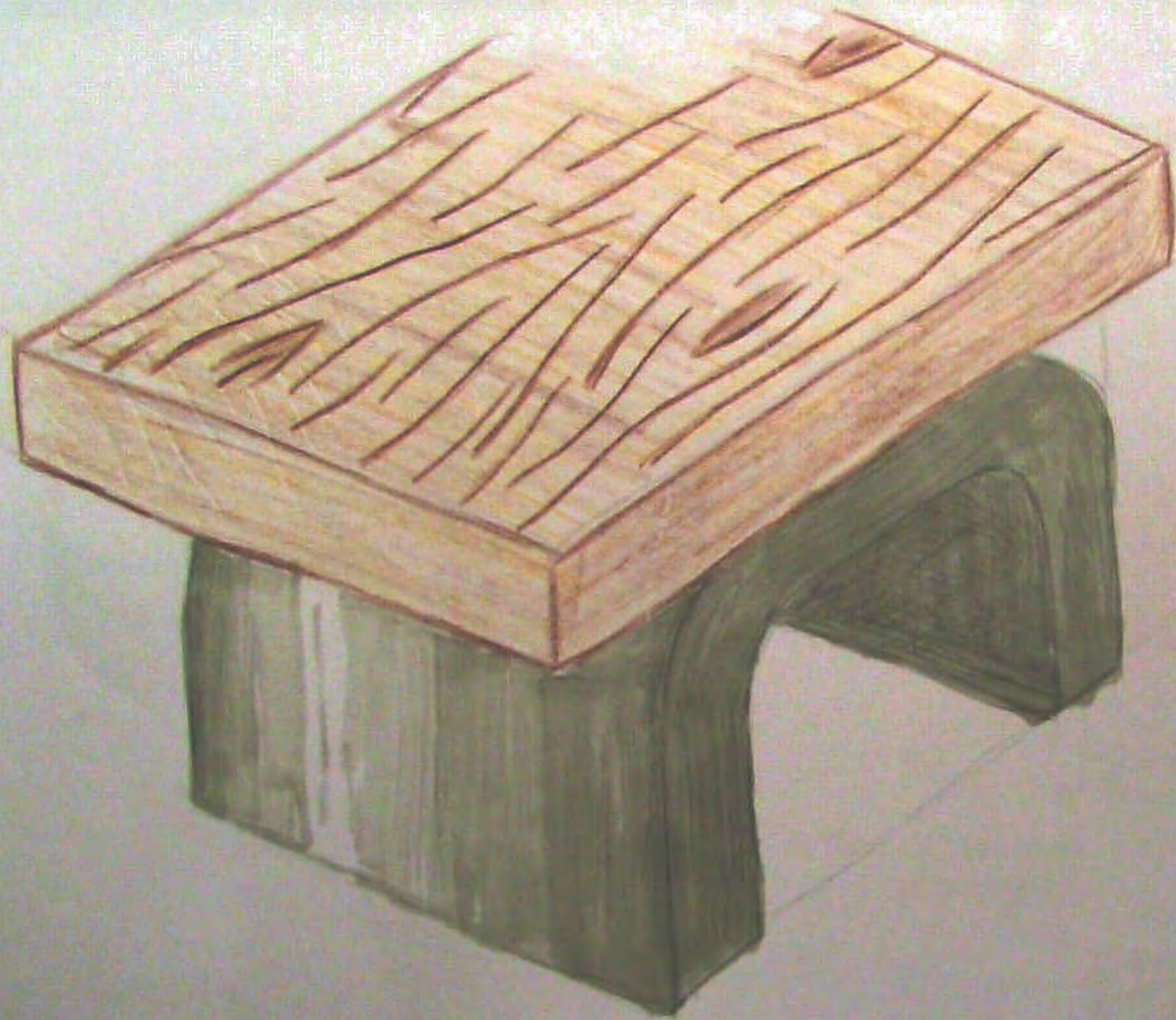


# Initial Ideas





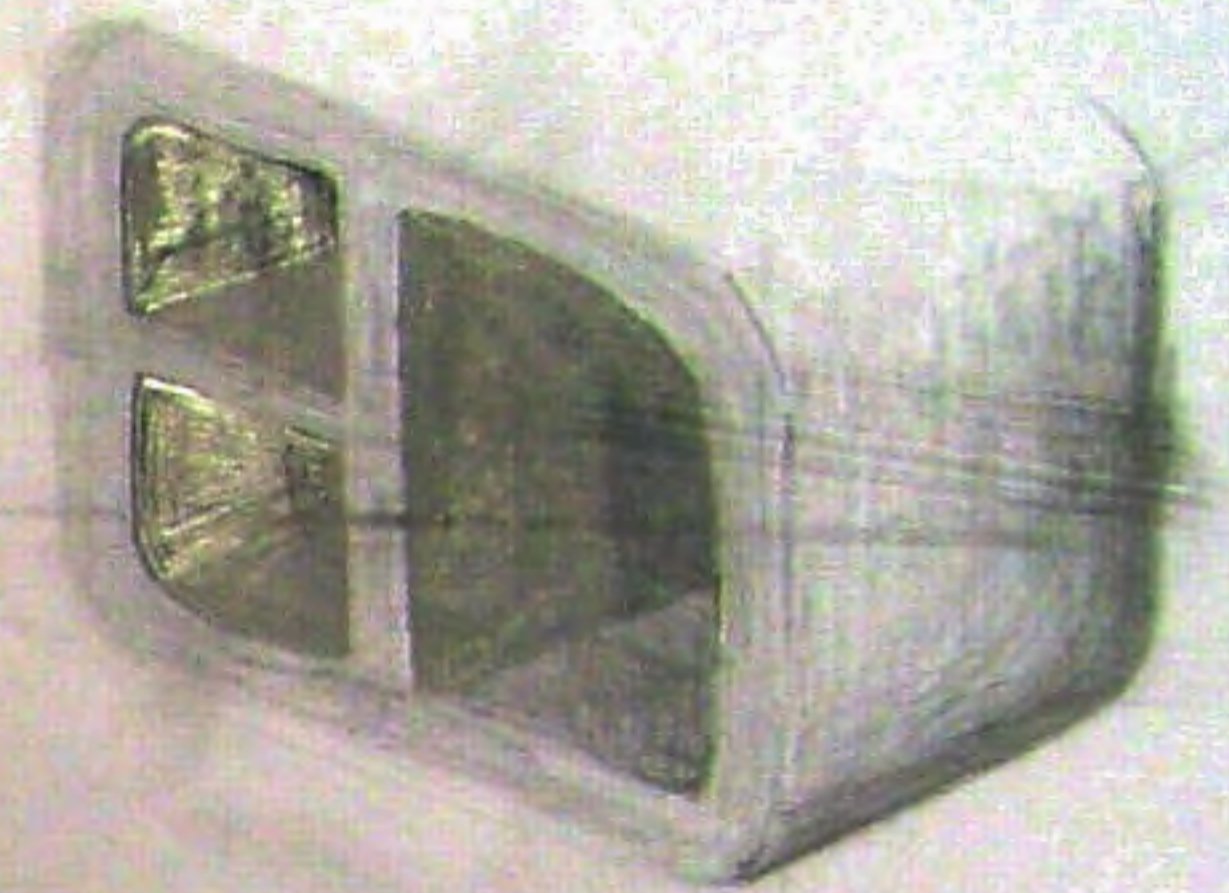
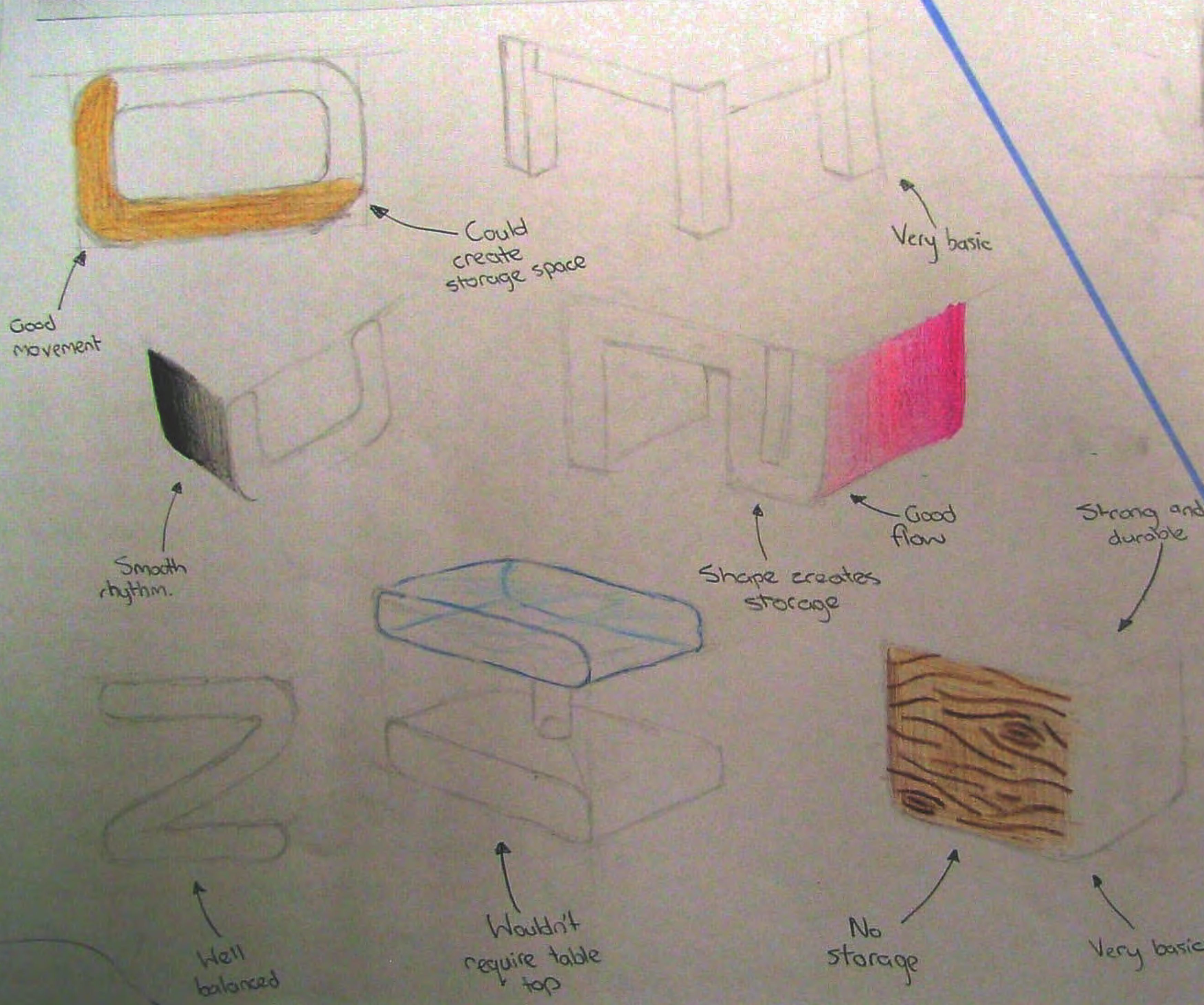
## Chosen Idea



I have chosen this idea due to the good functional aspects it has. It is durable and strong which builds reliability. It is also very user-friendly, sitting at a good height and with good dimensions. It has very raw aesthetics with a decent shape and an interesting texture with the wood, however it does have great aesthetic potential.



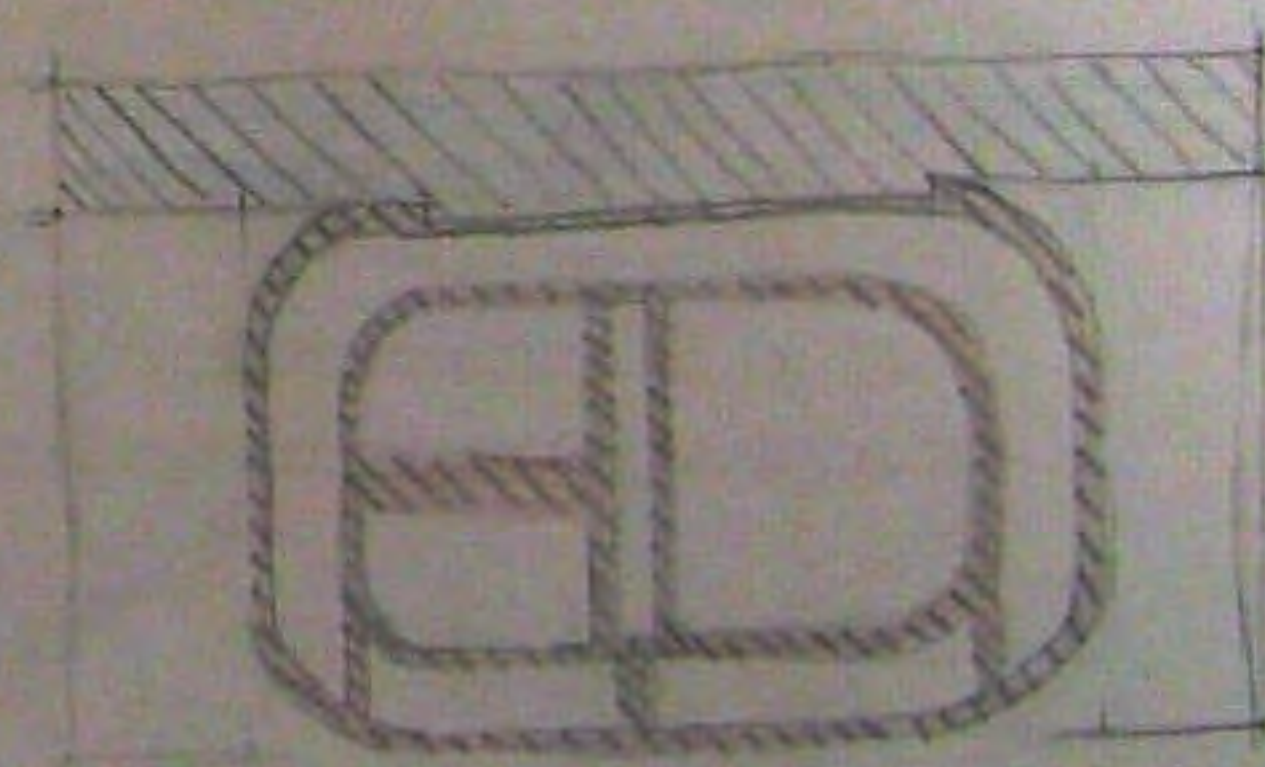
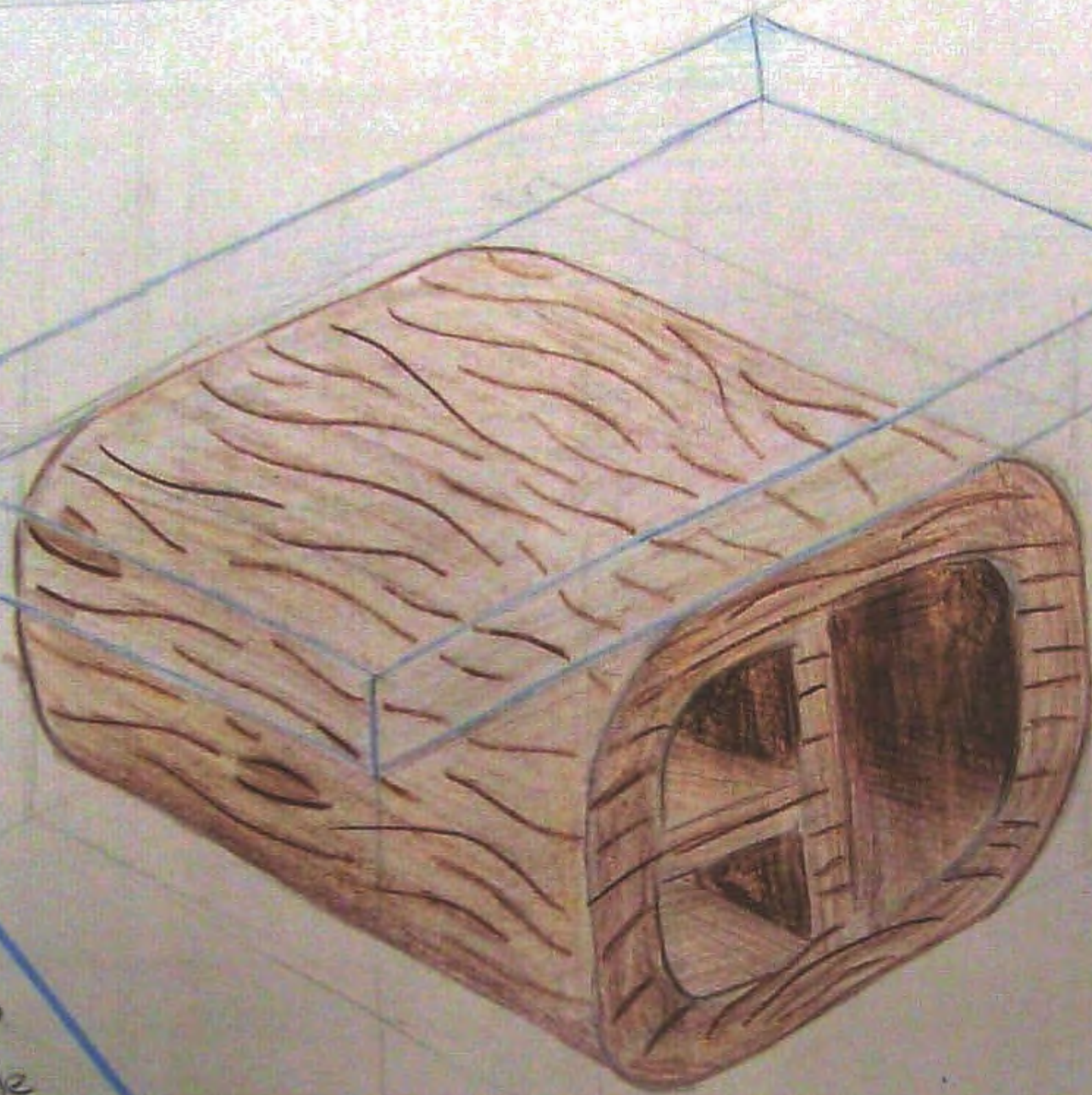
# Shape Development



I have chosen this shape for my coffee table's legs. This is due to the nice shape which looks aesthetically pleasing as well as being functionally effective. It has good shelving for the table and is strong and stable. It is balanced and will be durable.



# Final Idea



I think this is a good final design. It has good storage space which is easy to access. It is stable and reliable, as well as being strong. The table is aesthetically pleasing due to the natural texture of the wood, which contrasts wonderfully with the blue tinted glass. The shape is basic but works well and is generally a good design.



## **Level 1 Design and Visual Communication**

### **91063: Produce freehand sketches to communicate design ideas**

#### **Exemplar for Achievement**

This submission explores aesthetic design features of shape, form and texture through 2D and 3D sketches. Quick rendering techniques communicate material properties such as transparency and timber grain.

Exploration of construction, structure and scale and proportion by showing the object in context or use and its relationship to the user could strengthen the submission.