

Problem: Where are the tsunami risk areas and what warning and evacuation plans does Tauranga have?

[1]

North Island map showing the location of Tauranga - Fig 1

Map showing the location of the areas that will most be affected by the tsunami - Fig 2
The areas shown in orange will need to be evacuated as they are within 500m of the main coast. The area stretches from Mount Maunganui to the end of Papamoa Beach road...
This image showed evidence of overlay and buffer zones being created in manipulations

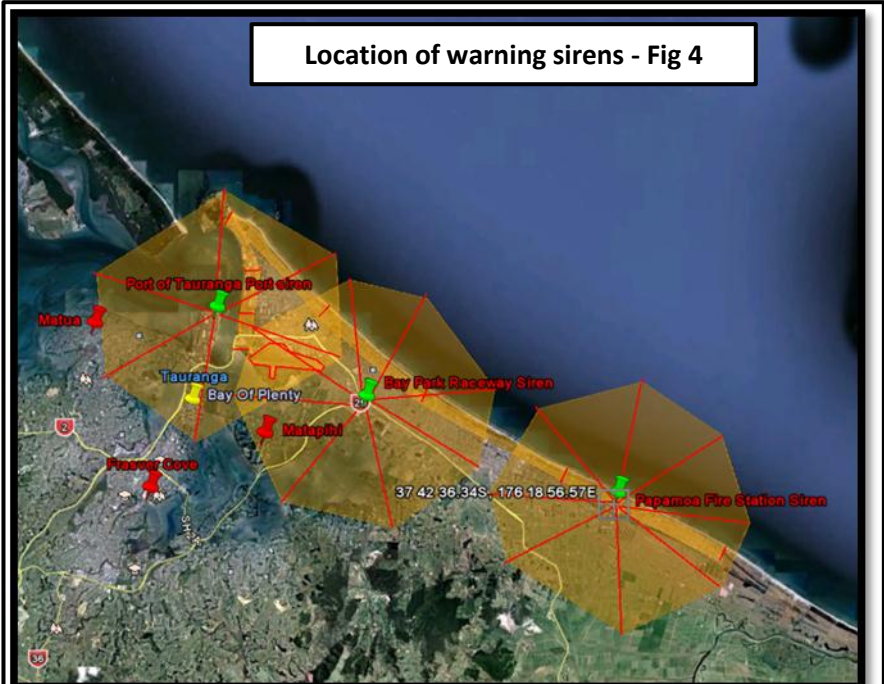
Main roads used for evacuations – Fig 3



Evacuation routes are in place as people will need to move to higher ground...

Evacuation route 1: ... [2]

Evacuation route 2: ...



Location of warning sirens - Fig 4

The shapes show where the sirens can and cannot be heard. The 3 sirens are the Port of Tauranga Siren ... [3]